

(FILE 'HOME' ENTERED AT 14:17:44 ON 08 JUN 2005)

FILE 'REGISTRY' ENTERED AT 14:17:56 ON 08 JUN 2005

L1           1 SEA ABB=ON PLU=ON FURAN/CN  
              D  
              E FURAN/CN  
L2           1 SEA ABB=ON PLU=ON TETRAHYDROFURAN/CN  
              D  
              E TETRAHYDROFURAN/CN  
L3           1 SEA ABB=ON PLU=ON BENZOFURAN/CN  
              D  
              E "2,3-DIHYDROBENZOFURAN"/CN  
L4           1 SEA ABB=ON PLU=ON "2,3-DIHYDROBENZOFURAN"/CN  
              D  
              E FURAZANE/CN  
              E OXAZOLE/CN  
L5           1 SEA ABB=ON PLU=ON OXAZOLE/CN  
              D  
              E ISOOXAZOLE/CN  
              E ISOXAZOLE/CN  
L6           1 SEA ABB=ON PLU=ON ISOXAZOLE/CN  
              D  
              E "1,2-BENZISOXAZOLE"/CN  
L7           1 SEA ABB=ON PLU=ON "1,2-BENZISOXAZOLE"/CN  
              D  
              E "2-METHYLBENZOXAZOLE"/CN  
L8           1 SEA ABB=ON PLU=ON 2-METHYLBENZOXAZOLE/CN  
              D

FILE 'CAPLUS' ENTERED AT 14:27:23 ON 08 JUN 2005

L9           35594 SEA ABB=ON PLU=ON L1 OR L2 OR L3 OR L4 OR L5 OR L6 OR L7 OR  
              L8  
L10          38 SEA ABB=ON PLU=ON L9 AND (INKJET? OR INK-JET? OR (INK JET?))  
L11          38 FOCUS L10 1-  
              D 1-38 ALL RN

FILE 'USPATFULL, USPAT2' ENTERED AT 14:31:08 ON 08 JUN 2005

L12          4871 SEA ABB=ON PLU=ON L1 OR L2 OR L3 OR L4 OR L5 OR L6 OR L7 OR  
              L8  
L13          554 SEA ABB=ON PLU=ON L1 OR L2 OR L3 OR L4 OR L5 OR L6 OR L7 OR  
              L8  
TOTAL FOR ALL FILES  
L14          5425 SEA ABB=ON PLU=ON L1 OR L2 OR L3 OR L4 OR L5 OR L6 OR L7 OR  
              L8  
L15          2 SEA ABB=ON PLU=ON L4 AND (INKJET? OR INK-JET? OR (INK JET?))  
L16          1 SEA ABB=ON PLU=ON L4 AND (INKJET? OR INK-JET? OR (INK JET?))  
TOTAL FOR ALL FILES  
L17          3 SEA ABB=ON PLU=ON L4 AND (INKJET? OR INK-JET? OR (INK JET?))  
              D 1-3 BIB AB IND RN

=>

=> d

L1 ANSWER 1 OF 1 REGISTRY COPYRIGHT 2005 ACS on STN  
RN 110-00-9 REGISTRY  
ED Entered STN: 16 Nov 1984  
CN **Furan (7CI, 8CI, 9CI)** (CA INDEX NAME)

OTHER NAMES:

CN Divinylene oxide  
CN Furfuran  
CN Oxacyclopentadiene  
CN Oxole  
CN Tetrole  
FS 3D CONCORD  
MF C4 H4 O  
CI COM, RPS

LC STN Files: ADISNEWS, AGRICOLA, ANABSTR, AQUIRE, BEILSTEIN\*, BIOBUSINESS, BIOSIS, BIOTECHNO, CA, CANCERLIT, CAOLD, CAPLUS, CASREACT, CBNB, CEN, CHEMCATS, CHEMINFORMRX, CHEMLIST, CHEMSAFE, CIN, CSCHEM, CSNB, DETHERM\*, DIPPR\*, EMBASE, ENCOMPLIT, ENCOMPLIT2, ENCOMPPAT, ENCOMPPAT2, GMELIN\*, HODOC\*, HSDB\*, IFICDB, IFIPAT, IFIUDB, IPA, MEDLINE, MRCK\*, MSDS-OHS, NAPRALERT, NIOSHTIC, PDLCOM\*, PIRA, PROMT, RTECS\*, SPECINFO, SYNTHLINE, TOXCENTER, TULSA, ULIDAT, USPAT2, USPATFULL, VTB

(\*File contains numerically searchable property data)

Other Sources: DSL\*\*, EINECS\*\*, TSCA\*\*

(\*\*Enter CHEMLIST File for up-to-date regulatory information)



\*\*PROPERTY DATA AVAILABLE IN THE 'PROP' FORMAT\*\*

9613 REFERENCES IN FILE CA (1907 TO DATE)  
2033 REFERENCES TO NON-SPECIFIC DERIVATIVES IN FILE CA  
9623 REFERENCES IN FILE CAPLUS (1907 TO DATE)  
1 REFERENCES IN FILE CAOLD (PRIOR TO 1967)

=>

L2 ANSWER 1 OF 1 REGISTRY COPYRIGHT 2005 ACS on STN  
RN 109-99-9 REGISTRY  
ED Entered STN: 16 Nov 1984  
CN Furan, tetrahydro- (7CI, 8CI, 9CI) (CA INDEX NAME)

OTHER NAMES:

CN Butane  $\alpha,\delta$ -oxide  
CN Butane, 1,4-epoxy-  
CN Cyclotetramethylene oxide  
CN Furanidine  
CN NSC 57858  
CN Oxacyclopentane  
CN Oxolane  
CN **Tetrahydrofuran**  
CN Tetramethylene oxide

CN THF  
FS 3D CONCORD  
DR 77392-70-2  
MF C4 H8 O  
CI COM

LC STN Files: ADISNEWS, AGRICOLA, ANABSTR, AQUIRE, BEILSTEIN\*, BIOBUSINESS,  
BIOSIS, BIOTECHNO, CA, CANCERLIT, CAOLD, CAPLUS, CASREACT, CBNB, CEN,  
CHEMCATS, CHEMINFORMRX, CHEMLIST, CHEMSAFE, CIN, CSCHEM, CSNB, DDFU,  
DETERM\*, DIPPR\*, DRUGU, EMBASE, ENCOMPLIT, ENCOMPLIT2, ENCOMPAT,  
ENCOMPAT2, GMELIN\*, HODOC\*, HSDB\*, IFICDB, IFIPAT, IFIUDB, IPA,  
MEDLINE, MRCK\*, MSDS-OHS, NAPRALERT, NIOSHTIC, PDLCOM\*, PIRA, PROMT,  
RTECS\*, SPECINFO, SYNTHLINE, TOXCENTER, TULSA, ULIDAT, USPAT2,  
USPATFULL, VETU, VTB

(\*File contains numerically searchable property data)

Other Sources: DSL\*\*, EINECS\*\*, TSCA\*\*

(\*\*Enter CHEMLIST File for up-to-date regulatory information)



\*\*PROPERTY DATA AVAILABLE IN THE 'PROP' FORMAT\*\*

22433 REFERENCES IN FILE CA (1907 TO DATE)  
813 REFERENCES TO NON-SPECIFIC DERIVATIVES IN FILE CA  
22489 REFERENCES IN FILE CAPLUS (1907 TO DATE)  
1 REFERENCES IN FILE CAOLD (PRIOR TO 1967)

=>

L3 ANSWER 1 OF 1 REGISTRY COPYRIGHT 2005 ACS on STN  
RN 271-89-6 REGISTRY  
ED Entered STN: 16 Nov 1984  
CN **Benzofuran** (6CI, 8CI, 9CI) (CA INDEX NAME)

OTHER NAMES:

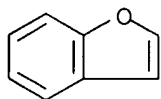
CN 1-Oxindene  
CN 2,3-Benzofuran  
CN AT 33852  
CN Benzofurfuran  
CN Benzo [b] furan  
CN Coumarone  
CN NSC 1255  
CN R 7204  
FS 3D CONCORD  
MF C8 H6 O  
CI COM, RPS  
LC STN Files: AGRICOLA, ANABSTR, AQUIRE, BEILSTEIN\*, BIOBUSINESS, BIOSIS,

BIOTECHNO, CA, CANCERLIT, CAOLD, CAPLUS, CASREACT, CBNB, CEN, CHEMCATS,  
CHEMINFORMRX, CHEMLIST, CIN, CSCHEM, CSNB, DETHERM\*, EMBASE, ENCOMPLIT,  
ENCOMPLIT2, ENCOMPPAT, ENCOMPPAT2, GMELIN\*, HODOC\*, HSDB\*, IFICDB,  
IFIPAT, IFIUDB, MEDLINE, MRCK\*, MSDS-OHS, NAPRALERT, NIOSHTIC, PIRA,  
PROMT, PS, RTECS\*, SPECINFO, SYNTHLINE, TOXCENTER, ULIDAT, USPAT2,  
USPATFULL, VTB

(\*File contains numerically searchable property data)

Other Sources: DSL\*\*, EINECS\*\*, TSCA\*\*

(\*\*Enter CHEMLIST File for up-to-date regulatory information)



\*\*PROPERTY DATA AVAILABLE IN THE 'PROP' FORMAT\*\*

2158 REFERENCES IN FILE CA (1907 TO DATE)  
356 REFERENCES TO NON-SPECIFIC DERIVATIVES IN FILE CA  
2159 REFERENCES IN FILE CAPLUS (1907 TO DATE)  
59 REFERENCES IN FILE CAOLD (PRIOR TO 1967)

=>

L4 ANSWER 1 OF 1 REGISTRY COPYRIGHT 2005 ACS on STN  
RN 496-16-2 REGISTRY  
ED Entered STN: 16 Nov 1984  
CN Benzofuran, 2,3-dihydro- (6CI, 7CI, 8CI, 9CI) (CA INDEX NAME)

OTHER CA INDEX NAMES:

CN Benzofuran, 1,2-dihydro- (3CI)

OTHER NAMES:

CN **2,3-Dihydrobenzofuran**

CN 2,3-Dihydrobenzo[b]furan

CN Benzodihydrofuran

CN Coumaran

CN Dihydrobenzofuran

CN Kumaran

FS 3D CONCORD

MF C8 H8 O

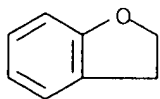
CI COM

LC STN Files: AGRICOLA, ANABSTR, AQUIRE, BEILSTEIN\*, BIOBUSINESS, BIOSIS,  
CA, CAOLD, CAPLUS, CASREACT, CEN, CHEMCATS, CHEMINFORMRX, CHEMLIST, CIN,  
CSCHEM, DETHERM\*, GMELIN\*, HODOC\*, IFICDB, IFIPAT, IFIUDB, MEDLINE,  
MRCK\*, NAPRALERT, NIOSHTIC, PIRA, PROMT, SPECINFO, SYNTHLINE, TOXCENTER,  
USPAT2, USPATFULL

(\*File contains numerically searchable property data)

Other Sources: EINECS\*\*, NDSL\*\*, TSCA\*\*

(\*\*Enter CHEMLIST File for up-to-date regulatory information)



\*\*PROPERTY DATA AVAILABLE IN THE 'PROP' FORMAT\*\*

640 REFERENCES IN FILE CA (1907 TO DATE)

24 REFERENCES TO NON-SPECIFIC DERIVATIVES IN FILE CA

642 REFERENCES IN FILE CAPLUS (1907 TO DATE)

12 REFERENCES IN FILE CAOLD (PRIOR TO 1967)

=>

L5 ANSWER 1 OF 1 REGISTRY COPYRIGHT 2005 ACS on STN

RN 288-42-6 REGISTRY

ED Entered STN: 16 Nov 1984

CN Oxazole (6CI, 7CI, 8CI, 9CI) (CA INDEX NAME)

OTHER NAMES:

CN 1,3-Oxazole

FS 3D CONCORD

MF C3 H3 N O

CI COM, RPS

LC STN Files: AGRICOLA, ANABSTR, BEILSTEIN\*, BIOBUSINESS, BIOSIS,  
BIOTECHNO, CA, CAOLD, CAPLUS, CASREACT, CHEMCATS, CHEMINFORMRX,  
CHEMLIST, CIN, CSCHEM, DETHERM\*, DIPPR\*, EMBASE, HODOC\*, IFICDB, IFIPAT,  
IFIUDB, PIRA, PROMT, SPECINFO, TOXCENTER, TULSA, USPAT2, USPATFULL  
(\*File contains numerically searchable property data)

Other Sources: EINECS\*\*

(\*\*Enter CHEMLIST File for up-to-date regulatory information)



\*\*PROPERTY DATA AVAILABLE IN THE 'PROP' FORMAT\*\*

893 REFERENCES IN FILE CA (1907 TO DATE)

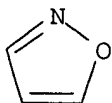
316 REFERENCES TO NON-SPECIFIC DERIVATIVES IN FILE CA

895 REFERENCES IN FILE CAPLUS (1907 TO DATE)

11 REFERENCES IN FILE CAOLD (PRIOR TO 1967)

=>

L6 ANSWER 1 OF 1 REGISTRY COPYRIGHT 2005 ACS on STN  
RN 288-14-2 REGISTRY  
ED Entered STN: 16 Nov 1984  
CN Isoxazole (6CI, 7CI, 8CI, 9CI) (CA INDEX NAME)  
OTHER NAMES:  
CN 1,2-Oxazole  
CN 1-Oxa-2-azacyclopentadiene  
CN NSC 137774  
FS 3D CONCORD  
MF C3 H3 N O  
CI COM, RPS  
LC STN Files: ADISNEWS, AGRICOLA, BEILSTEIN\*, BIOBUSINESS, BIOSIS,  
BIOTECHNO, CA, CAOLD, CAPLUS, CASREACT, CEN, CHEMCATS, CHEMLIST, CIN,  
CSCHEM, DETHERM\*, DIPPR\*, EMBASE, HODOC\*, IFICDB, IFIPAT, IFIUBD,  
MSDS-OHS, NIOSHTIC, PIRA, PROMT, SPECINFO, TOXCENTER, USPAT2, USPATFULL  
(\*File contains numerically searchable property data)  
Other Sources: DSL\*\*, EINECS\*\*, TSCA\*\*  
(\*\*Enter CHEMLIST File for up-to-date regulatory information)

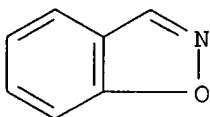


\*\*PROPERTY DATA AVAILABLE IN THE 'PROP' FORMAT\*\*

775 REFERENCES IN FILE CA (1907 TO DATE)  
195 REFERENCES TO NON-SPECIFIC DERIVATIVES IN FILE CA  
775 REFERENCES IN FILE CAPLUS (1907 TO DATE)  
15 REFERENCES IN FILE CAOLD (PRIOR TO 1967)

=>

L7 ANSWER 1 OF 1 REGISTRY COPYRIGHT 2005 ACS on STN  
RN 271-95-4 REGISTRY  
ED Entered STN: 16 Nov 1984  
CN 1,2-Benzisoxazole (6CI, 7CI, 8CI, 9CI) (CA INDEX NAME)  
OTHER NAMES:  
CN 1-Oxa-2-aza-1H-indene  
CN Indoxazene  
FS 3D CONCORD  
MF C7 H5 N O  
CI COM, RPS  
LC STN Files: AGRICOLA, BEILSTEIN\*, BIOBUSINESS, BIOSIS, BIOTECHNO, CA,  
CAOLD, CAPLUS, CASREACT, CHEMCATS, CHEMINFORMRX, CHEMLIST, CSCHEM,  
EMBASE, HODOC\*, SPECINFO, TOXCENTER, USPAT2, USPATFULL  
(\*File contains numerically searchable property data)  
Other Sources: EINECS\*\*  
(\*\*Enter CHEMLIST File for up-to-date regulatory information)



\*\*PROPERTY DATA AVAILABLE IN THE 'PROP' FORMAT\*\*

124 REFERENCES IN FILE CA (1907 TO DATE)  
19 REFERENCES TO NON-SPECIFIC DERIVATIVES IN FILE CA  
124 REFERENCES IN FILE CAPLUS (1907 TO DATE)  
4 REFERENCES IN FILE CAOLD (PRIOR TO 1967)

=>



L8 ANSWER 1 OF 1 REGISTRY COPYRIGHT 2005 ACS on STN  
RN 95-21-6 REGISTRY  
ED Entered STN: 16 Nov 1984  
CN Benzoxazole, 2-methyl- (6CI, 7CI, 8CI, 9CI) (CA INDEX NAME)

OTHER NAMES:

CN 2-Methyl-1,3-benzoxazole

CN **2-Methylbenzoxazole**

CN NSC 3824

FS 3D CONCORD

MF C8 H7 N O

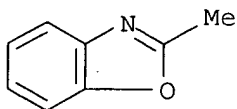
CI COM

LC STN Files: BEILSTEIN\*, BIOBUSINESS, BIOSIS, CA, CAOLD, CAPLUS, CASREACT,  
CHEMCATS, CHEMINFORMRX, CHEMLIST, CSCHEM, GMELIN\*, HODOC\*, IFICDB,  
IFIPAT, IFIUDB, MSDS-OHS, NAPRALERT, RTECS\*, SPECINFO, TOXCENTER,  
USPATFULL

(\*File contains numerically searchable property data)

Other Sources: DSL\*\*, EINECS\*\*, TSCA\*\*

(\*\*Enter CHEMLIST File for up-to-date regulatory information)



\*\*PROPERTY DATA AVAILABLE IN THE 'PROP' FORMAT\*\*

388 REFERENCES IN FILE CA (1907 TO DATE)

10 REFERENCES TO NON-SPECIFIC DERIVATIVES IN FILE CA

388 REFERENCES IN FILE CAPLUS (1907 TO DATE)

23 REFERENCES IN FILE CAOLD (PRIOR TO 1967)

=>

FILE 'REGISTRY' ENTERED AT 17:20:08 ON 08 JUN 2005

L4 1 SEA ABB=ON PLU=ON 496-16-2  
D

FILE 'CAPLUS' ENTERED AT 17:20:43 ON 08 JUN 2005

L5 642 SEA ABB=ON PLU=ON L4  
L6 2 SEA ABB=ON PLU=ON L5 AND (INKJET? OR INK-JET? OR (INK JET?))  
D 1-2 ALL RN

FILE 'USPATFULL, USPAT2' ENTERED AT 17:21:45 ON 08 JUN 2005

L7 142 SEA ABB=ON PLU=ON L4  
L8 18 SEA ABB=ON PLU=ON L4  
TOTAL FOR ALL FILES  
L9 160 SEA ABB=ON PLU=ON L4  
L10 2 SEA ABB=ON PLU=ON L7 AND (INKJET? OR INK-JET? OR (INK JET?))  
L11 1 SEA ABB=ON PLU=ON L8 AND (INKJET? OR INK-JET? OR (INK JET?))  
TOTAL FOR ALL FILES  
L12 .3 SEA ABB=ON PLU=ON L9 AND (INKJET? OR INK-JET? OR (INK JET?))  
D 1-3 BIB AB

=>